

simalube – the automatic single-point lubricator

Technical information for the maritime industry



simalube

 SWISS MADE

The lubrication expert

Increased operational safety on ships thanks to simalube

The demand for technical reliability is significantly higher on a ship than in a vehicle on land: lasting performance in a rough environment (high stress from vibration, high salt content in the air, etc.) and a long lifespan are essential. simalube lubricators help fulfill these exacting demands. They automatically and continuously lubricate not only ball bearings in motors and pumps, but also chains, wire cables, guides, toothed gears, swiveling mechanisms, and more. Through the reliable care of the mechanical components with lubricant, disruptions and breakdowns can be avoided. simalube greatly reduces maintenance efforts and costs.

Reliable lubrication

simalube lubricators are ideal for use in hard-to-reach areas. The lubricators also automatically and reliably care for exposed lubrication points. With simalube, regular manual lubrication of machines is no longer necessary.

«Long lifespan and low maintenance costs for ships thanks to reliable, continuous lubrication with simalube»

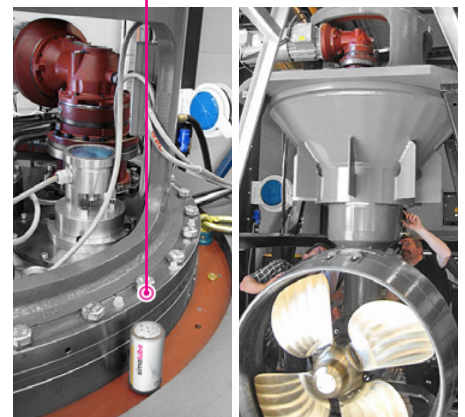
«simalube replaces manual lubrication»



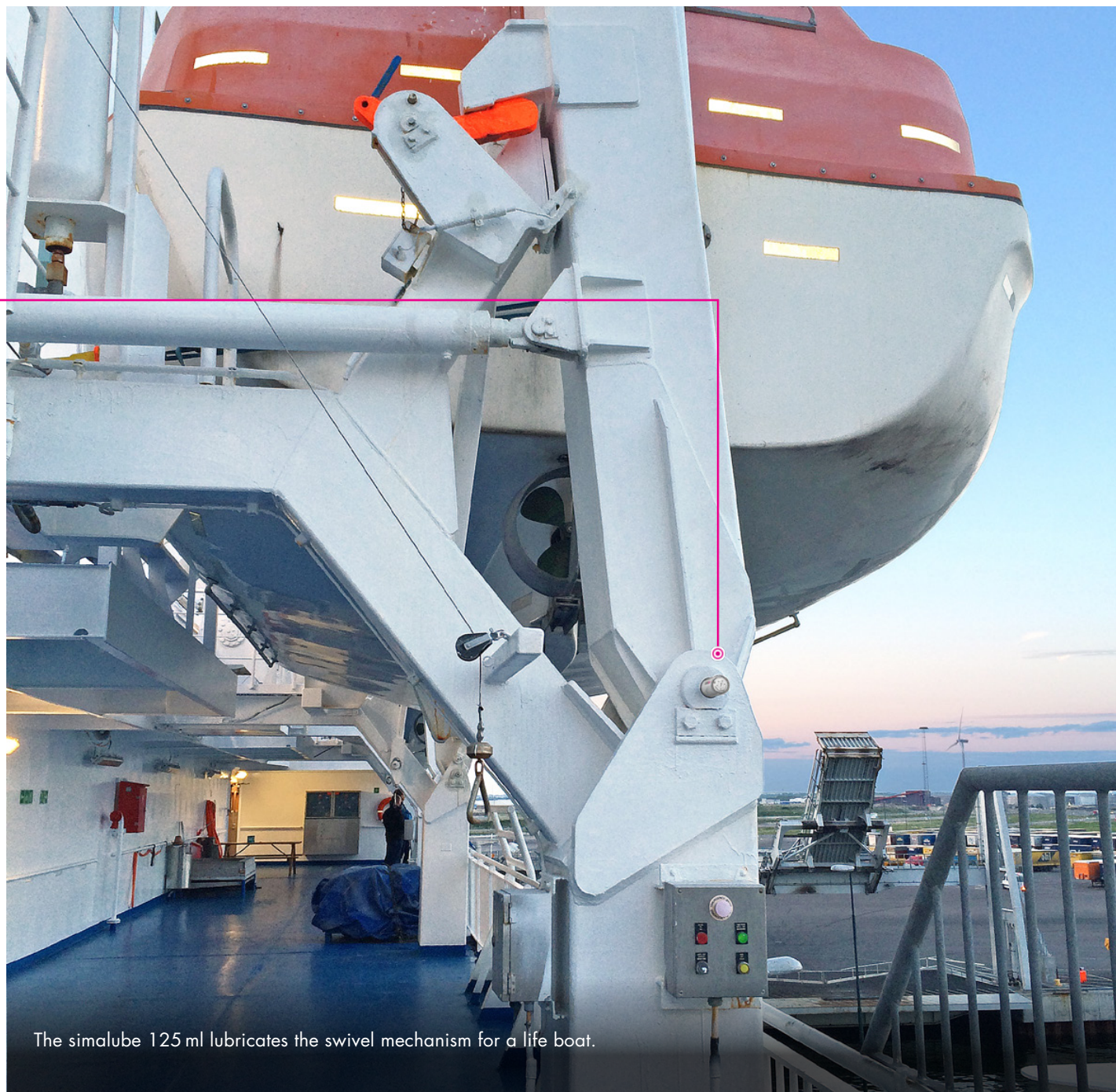
The ABB electric motors are fitted with 60 ml simalube lubricators.



Three 125 ml simalube lubricators with brush applications both lubricate and clean the cable.



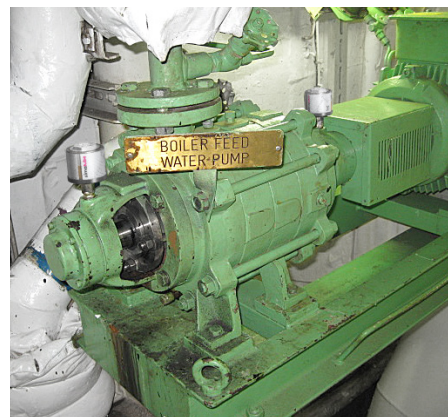
A simalube 125 ml seals the thruster so that no water can enter.



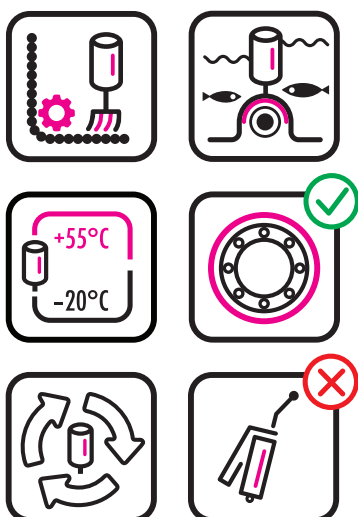
The steering wheel is lubricated with two 125 ml lubricators.



The simalube lubricator continuously oils chains, even in tight spaces. Additionally, the brush cleans the chain.



simalube 30ml are installed on the water pumps of the boiler.



Applications and advantages

simalube applications on ships:

- Ventilator drives and bearings
- Pump motors and seals
- Compressors
- Waste incineration systems
- Elevators/escalators
- Cranes/swivel mechanisms
- Waste water systems
- Laundry and purification systems
- Distillation systems
- Fire protection systems
- Chains and steel cables

Advantages of the simalube lubrication system:

- Proven lubrication system in the maritime industry
- Reduction of service requirements and maintenance costs: because manual lubrication is no longer necessary, less labour is required and time-savings are great
- Decrease in corrosion-related failures
- Shutting down the machines for maintenance is no longer necessary
- Longer service life of machines thanks to continuous and precise lubrication
- Flexibility: The running time is adjustable from 1–12 months
- Only one type of lubricator is needed per application. This reduces storage costs
- Once the simalube is installed, the lubrication point is reliably lubricated and never forgotten
- Thanks to the transparent housing, the progress of the lubrication process can be monitored at all times (fill level control)
- Simple, environmentally-friendly disposal (100% recyclable)
- The hermetically sealed system prevents contamination by dust and debris (IP68)
- Available in 5 sizes: 15, 30, 60, 125, and 250 ml, plus multipoint



We will gladly inform you about the application of simalube products in the maritime industry.

Our highly-qualified specialists have an in-depth technical knowledge and will show you how automatic lubrication can reduce costs and extend the service life of your machines.