

lubrication systems



SB-5

ELECTRIC GREASE PUMP
CARTRIDGE TANK



1. The Small unit for Grease lubrication Systems	3
1.1 Features and benefits	3
1.2 Applications	3
2. Technical Data	3
2.1 Drive motor	3
3. Pumps and components	4
7. Electrical connections	5
7.1 Supply connector	5
7.2 Cable with inductive control	5
8. Adapter for cartridge	6
10. Dimensions SB-5	7

1. The Small unit for Grease lubrication Systems

The electric cartridge pump SB-5 is designed to provide lubricant within a progressive central lubrication system or single lubrication points. SB-5 can be used for lubrication of small machines and systems with up to 30/35 lubrication points.

1.1 Features and benefits

- Tension 12/24 V DC
- Electric Grease Lubrication Pump With 3 different grease cartridges
- Compact Build
- Clean Re-Fill Process (no grease gun)
- Usable with many cartridge types
- Large temperature range from -40° C to +70° C (depending on the grease. Under -20° C dedicated low temperature greases are required)
- High delivery pressure 290 bar
- Best in Class Protection: IP6K9K „Dust tight“(6K)
- High-pressure water resistant (9K)
- One pump for 2 different voltages

1.2 Applications



*Stationary machines
and systems*



*Construction vehicles
and machines*



Agriculture and forestry



*Special-purpose machines
and more*

2. Technical Data

Line output connection	1 / 8" G
Max operating pressure	220 bar (3191 psi)
Safety valve	set at 200 bar (2901 psi)
Temperature range	from -40° C to +70° C (depending on grease used, Under -20° C dedicated low temperature greases are required)
Lubricant	Grease from NLGI 000 to 2
Output	Constant 1 cm ³ / min
low level indication	yes (when supplied with electronic card)
Materials	Housing - PA6 GF30 Mechanical parts - Steel Cartridge protection Petg
Drive / motor	DC Motor (12 o 24 V DC 22 rpm)
Noise Level	<70dB (A)
Protection class	IP6K9K (ISO 20653)
Function	with or without electronic card

2.1 Drive motor

Supply voltage	12 V DC - 24 V DC
Current	max 5 A (incl. rev. battery protection)

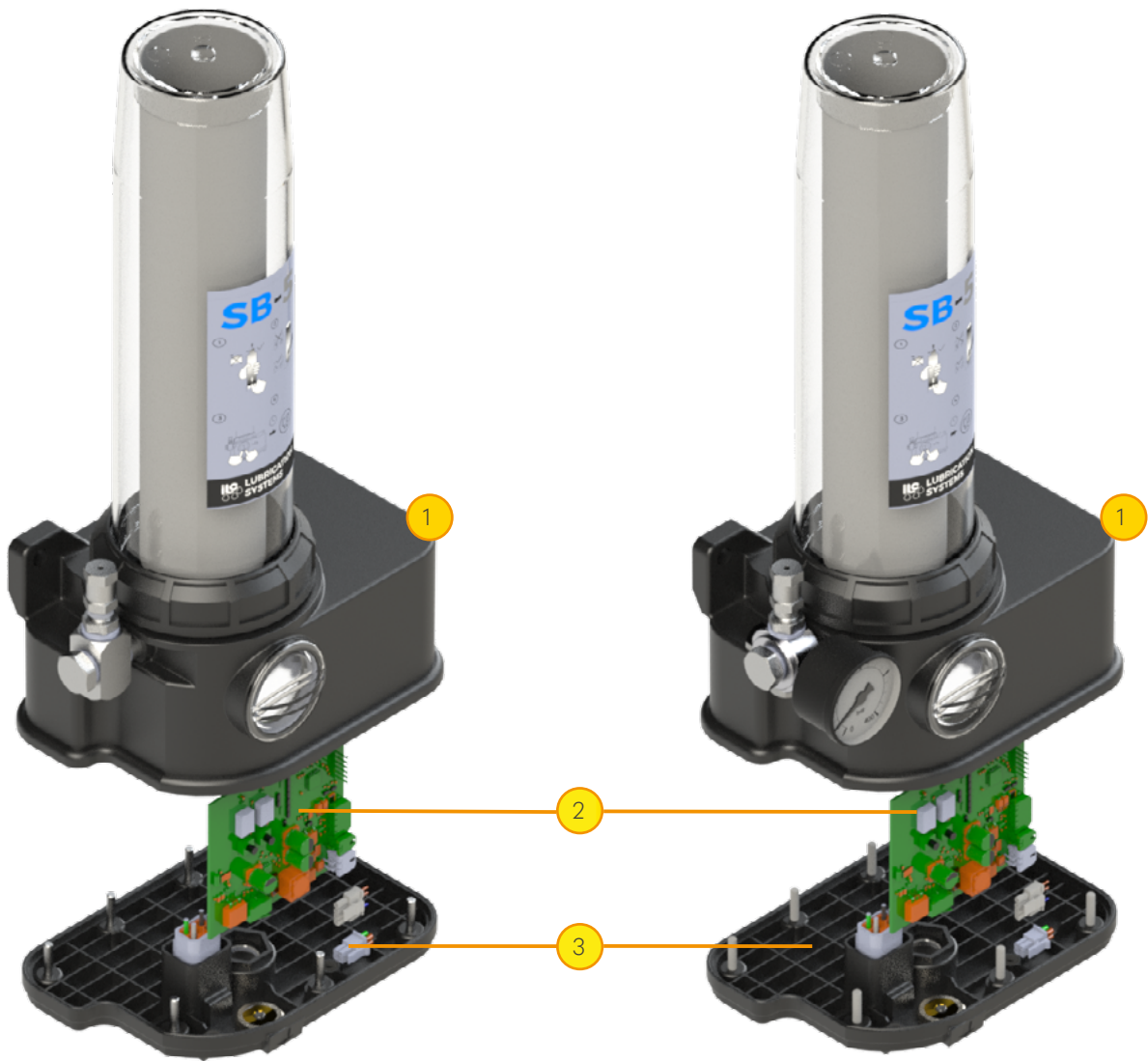
3. Pumps and components

45.12-24DC.CT

The pump is supplied complete with electronic board - power supply and M12x1 connector for progressive sensor. The pump outlet is 1/8 "BSP and is complete with an adjustable maximum pressure valve. The factory setting is 250 bar.

45.12-24DC.PG.CT

The pump is supplied complete with electronic board - power supply and M12x1 connector for progressive sensor, pressure gauge (0-400 bar). The pump outlet is 1/8 "BSP and is complete with an adjustable maximum pressure valve. The factory setting is 250 bar.



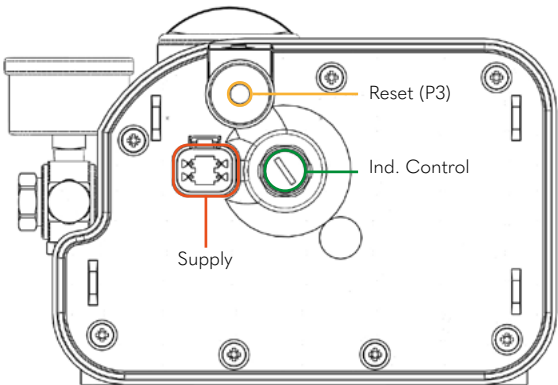
Position	Part N°	Description
1	A70.0931030	SB-5 motor box assembly + protection
2	A91.111676	SB-5 circuit board w/timer
3	A70.0931032	SB-5 motor cover assembly

7. Electrical connections

The electrical connection is the responsibility of the user, who must identify the power connection, minimum level alarm and/ or cycle alarm.

Connect the machine to the electrical line as indicated on the pump near the connector. The power cable must be of a cross-section suitable for the machine's absorption and of a type conforming to current regulations.

Both electrical connections are located on the bottom side of the pump.



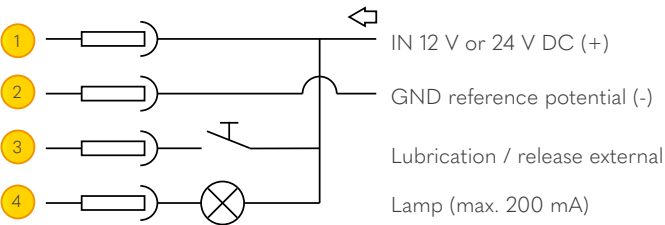
7.1 Supply connector

The SB-5 pump is supplied complete with a four-pin electrical Deutsch Stecker connector, which powers the pump and handles any alarm and level signals.

On request, it is possible to order the connector complete with four-wire cable (1 mm²) in two different lengths (5, 10).



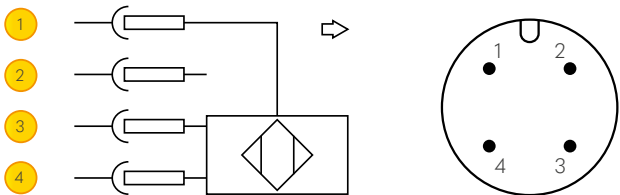
Part n°	Cable
45.CDL.4.05	5 m
45.CDL.4.10	10 m



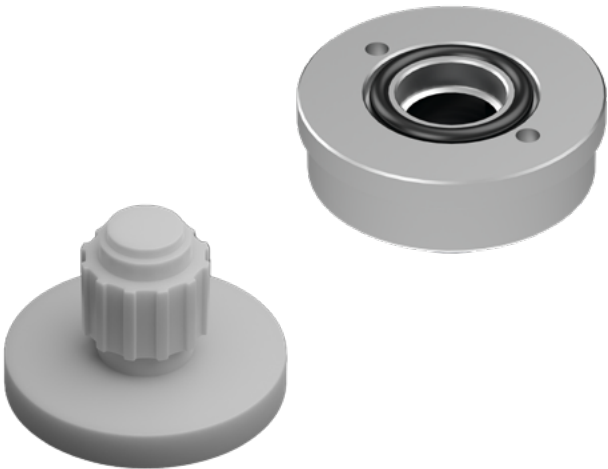
7.2 Cable with inductive control

A second connector, for the management of inductive control, can be installed on the pump. The connector complete with cable can be ordered on request.

M12x1 (M) / M8x1 (F)	M12x1 (M) / M12x1 (F)	Cable
45.CDC.3.05	45.CDC.4.05	5 m
45.CDC.3.10	45.CDC.4.10	10 m



8. Adapter for cartridge



Cartridge adaptor for sytem Ritter (400 gr)

Part n°
A70.0931077

Cartridge adaptor for system Reiner (500 gr)

Part n°
A70.0931078

10. Dimensions SB-5

